

February 12, 2018

Exploration Update

To accompany 02/12/18 news
release



Cautionary Statements



NYSE:HL

Cautionary Statement Regarding Forward Looking Statements

This presentation contains "forward-looking statements" within the meaning of Section 27A of the Securities Act of 1933, as amended, and Section 21E of the Securities Exchange Act of 1934, as amended, which are intended to be covered by the safe harbor created by such sections and other applicable laws, including Canadian Securities laws. Such forward-looking statements may include, without limitation: (i) expectations of adding reserves and resources; (vi) the possibility of increasing production due to accessing higher grade material and surface pits at Casa Berardi; (ii) possible strike extensions of veins at San Sebastian, potential for new discoveries, ability to ramp up underground mining during 2018, ability to expand the Hugh Zone and extend mine life further. Estimates or expectations of future events or results are based upon certain assumptions, which may prove to be incorrect. Such assumptions, include, but are not limited to: (i) there being no significant change to current geotechnical, metallurgical, hydrological and other physical conditions; (ii) permitting, development, operations and expansion of the Company's projects being consistent with current expectations and mine plans; (iii) political/regulatory developments in any jurisdiction in which the Company operates being consistent with its current expectations; (iv) the exchange rate for the Canadian dollar to the U.S. dollar, being approximately consistent with current levels; (v) certain price assumptions for gold, silver, lead and zinc; (vi) prices for key supplies being approximately consistent with current levels; (vii) the accuracy of our current mineral reserve and mineral resource estimates; and (viii) the Company's plans for development and production will proceed as expected and will not require revision as a result of risks or uncertainties, whether known, unknown or unanticipated. Where the Company expresses or implies an expectation or belief as to future events or results, such expectation or belief is expressed in good faith and believed to have a reasonable basis. However, such statements are subject to risks, uncertainties and other factors, which could cause actual results to differ materially from future results expressed, projected or implied by the "forward-looking statements." Such risks include, but are not limited to gold, silver and other metals price volatility, operating risks, currency fluctuations, increased production costs and variances in ore grade or recovery rates from those assumed in mining plans, community relations, conflict resolution and outcome of projects or oppositions, litigation, political, regulatory, labor and environmental risks, and exploration risks and results, including that mineral resources are not mineral reserves, they do not have demonstrated economic viability and there is no certainty that they can be upgraded to mineral reserves through continued exploration. For a more detailed discussion of such risks and other factors, see the Company's 2016 Form 10-K, filed on February 23, 2017 with the Securities and Exchange Commission (SEC), as well as the Company's other SEC filings. The Company does not undertake any obligation to release publicly revisions to any "forward-looking statement," including, without limitation, outlook, to reflect events or circumstances after the date of this presentation, or to reflect the occurrence of unanticipated events, except as may be required under applicable securities laws. Investors should not assume that any lack of update to a previously issued "forward-looking statement" constitutes a reaffirmation of that statement. Continued reliance on "forward-looking statements" is at investors' own risk.

Cautionary Note Regarding Estimates of Measured, Indicated and Inferred Resources

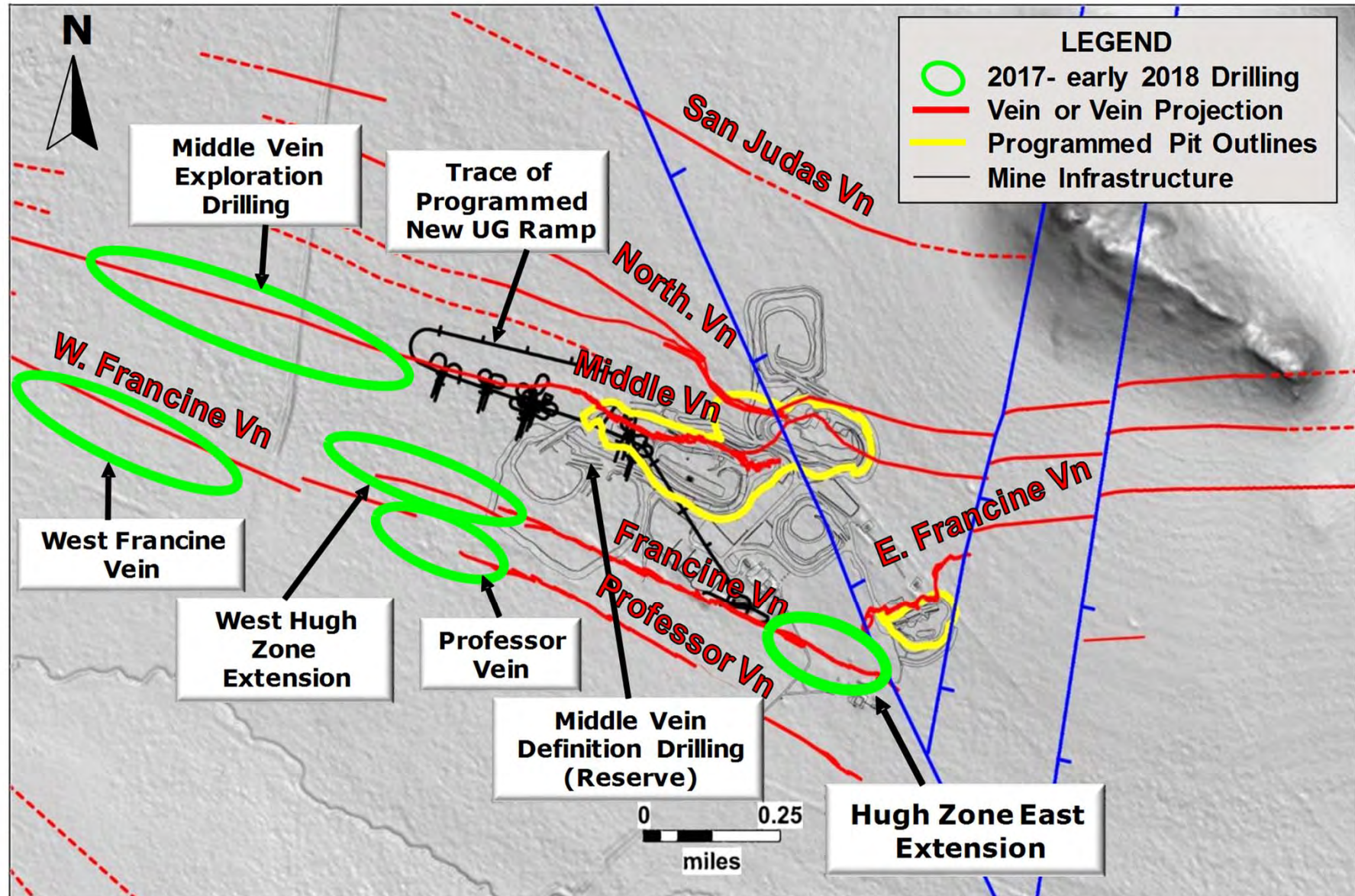
The United States Securities and Exchange Commission (SEC) permits mining companies, in their filings with the SEC, to disclose only those mineral deposits that a company can economically and legally extract or produce. We use certain terms in this presentation, such as "resource," "measured resources," "indicated resources," and "inferred resources" that are recognized by Canadian regulations, but that SEC guidelines generally prohibit U.S. registered companies from including in their filings with the SEC, except in certain circumstances. U.S. investors are urged to consider closely the disclosure in our most recent Form 10-K and Form 10-Q. You can review and obtain copies of these filings from the SEC's website at www.sec.gov.

Qualified Person (QP) Pursuant to Canadian National Instrument 43-101

Dean McDonald, PhD, P.Geo., Senior Vice President - Exploration of Hecla Mining Company, who serves as a Qualified Person under National Instrument 43-101("NI 43-101"), supervised the preparation of the scientific and technical information concerning Hecla's mineral projects in this presentation. Information regarding data verification, surveys and investigations, quality assurance program and quality control measures and a summary of analytical or testing procedures for the Greens Creek Mine are contained in a technical report titled "Technical Report for the Greens Creek Mine" effective date March 28, 2013, and for the Lucky Friday Mine are contained in a technical report titled "Technical Report for the Lucky Friday Mine Shoshone County, Idaho, USA" effective date April 2, 2014, for Casa Berardi are contained in a technical report titled "Technical Report on the mineral resource and mineral reserve estimate for Casa Berardi Mine, Northwestern Quebec, Canada" effective date March 31, 2014 (the "Casa Berardi Technical Report"), and for the San Sebastian Mine, Mexico, are contained in a technical report prepared for Hecla titled "Technical Report for the San Sebastian Ag-Au Property, Durango, Mexico" effective date September 8k 2015. Also included in these four technical reports is a description of the key assumptions, parameters and methods used to estimate mineral reserves and resources and a general discussion of the extent to which the estimates may be affected by any known environmental, permitting, legal, title, taxation, socio-political, marketing or other relevant factors. Copies of these technical reports are available under Hecla's and Aurizon's profiles on SEDAR at www.sedar.com. The Casa Berardi Technical Report was reviewed by Dr. McDonald on behalf of Hecla. To the best of Hecla's knowledge, information and belief, there is no new material scientific or technical information that would make the disclosure of the mineral resources and mineral reserves for Casa Berardi in this document inaccurate or misleading.

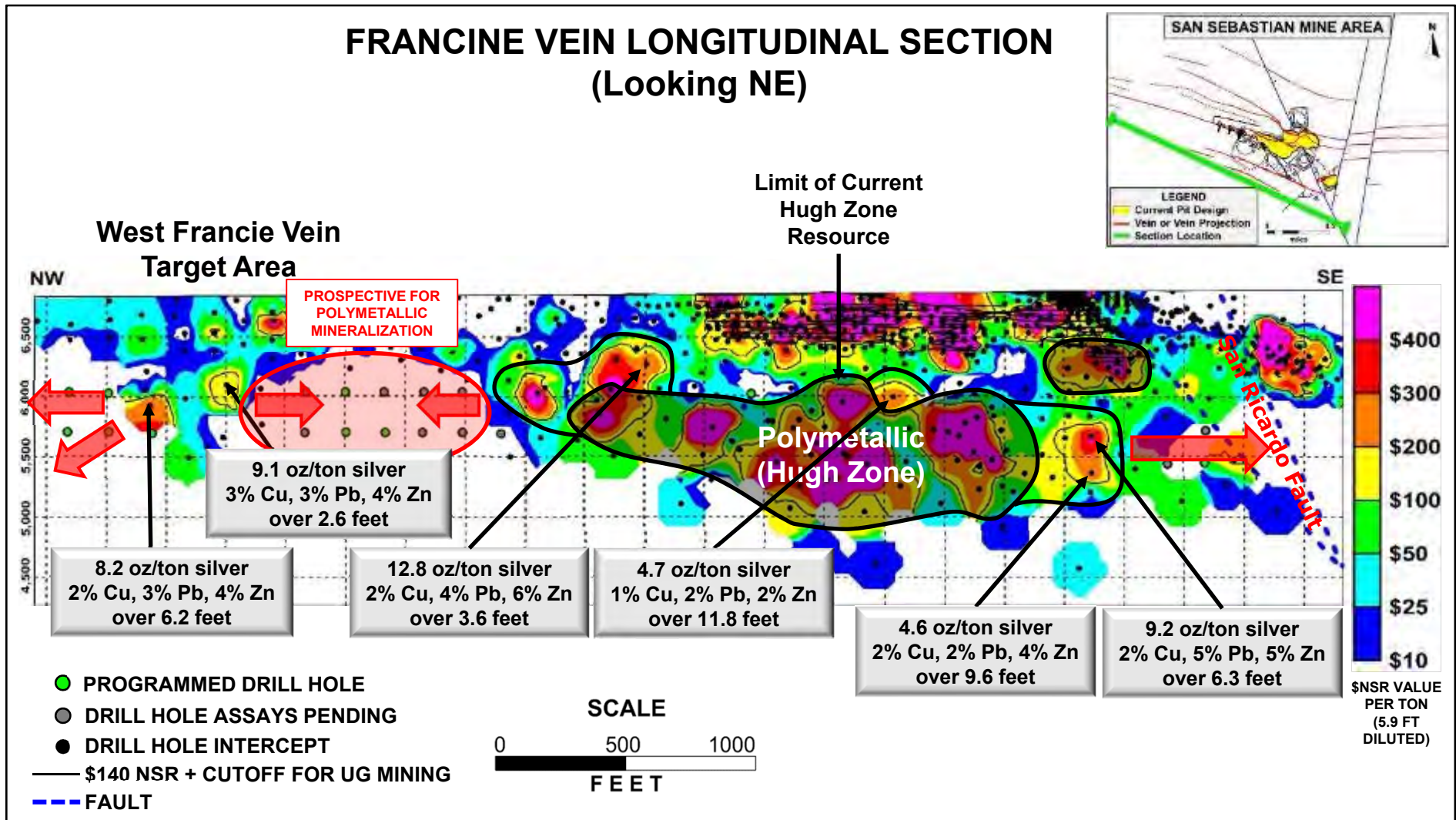
San Sebastian: Strong Exploration Potential

Continued discoveries near mine infrastructure



Francine Vein polymetallic potential

Polymetallic mineralization traced for over 5,000 feet of strike length

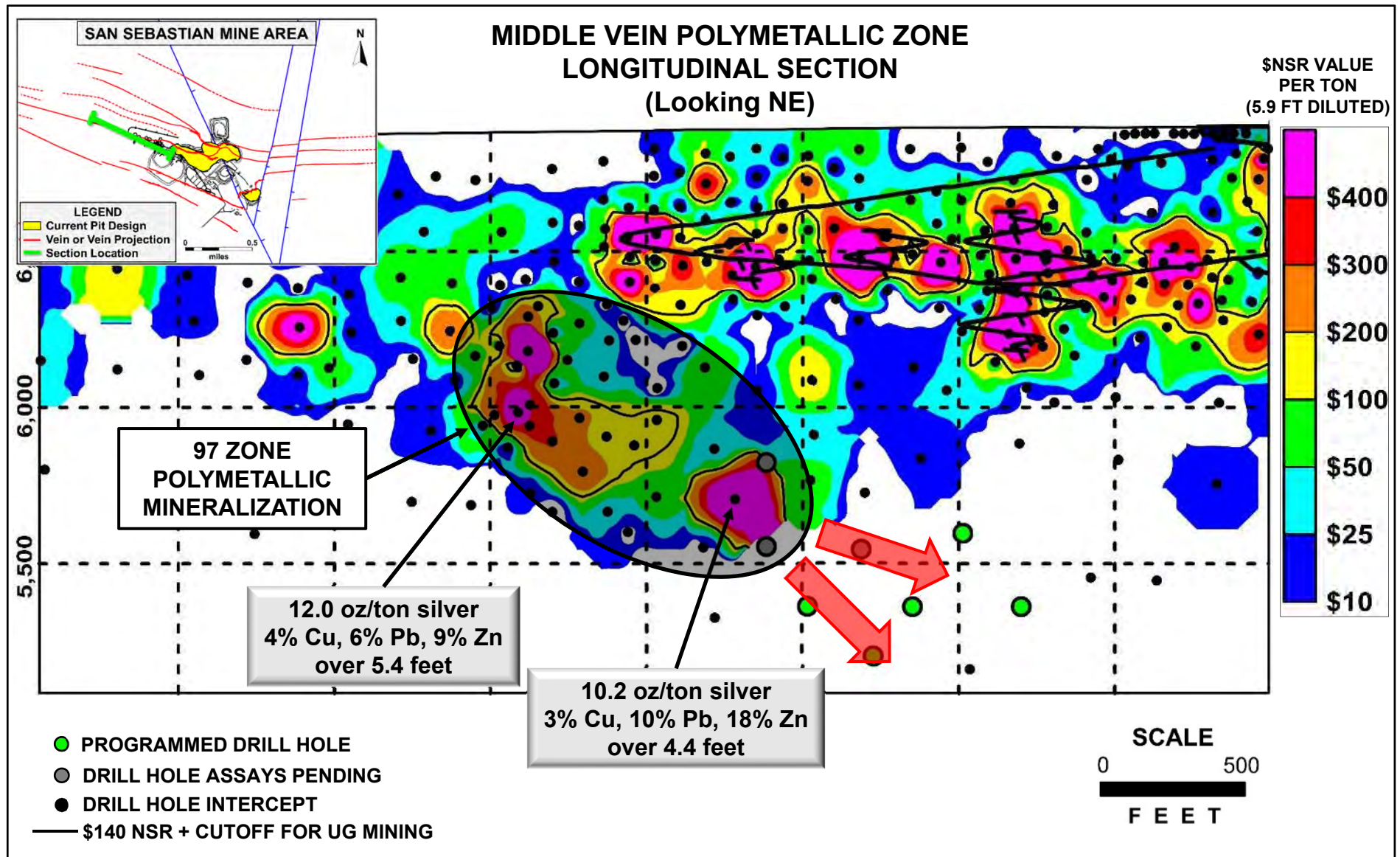


Expanding Middle Vein Polymetallic Mineralization

High-grade polymetallic intercepts near the Middle Vein ramp

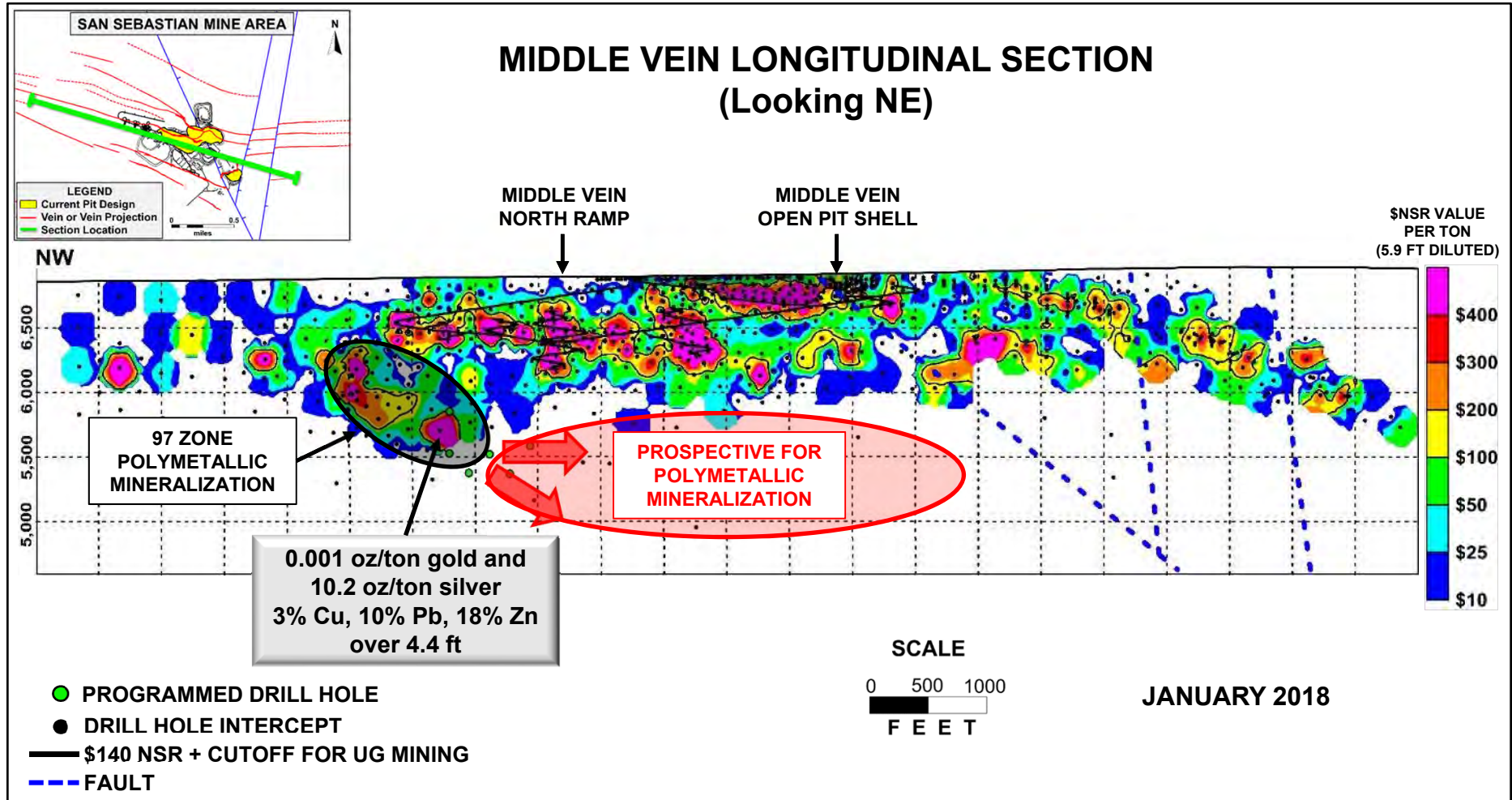


NYSE:HL



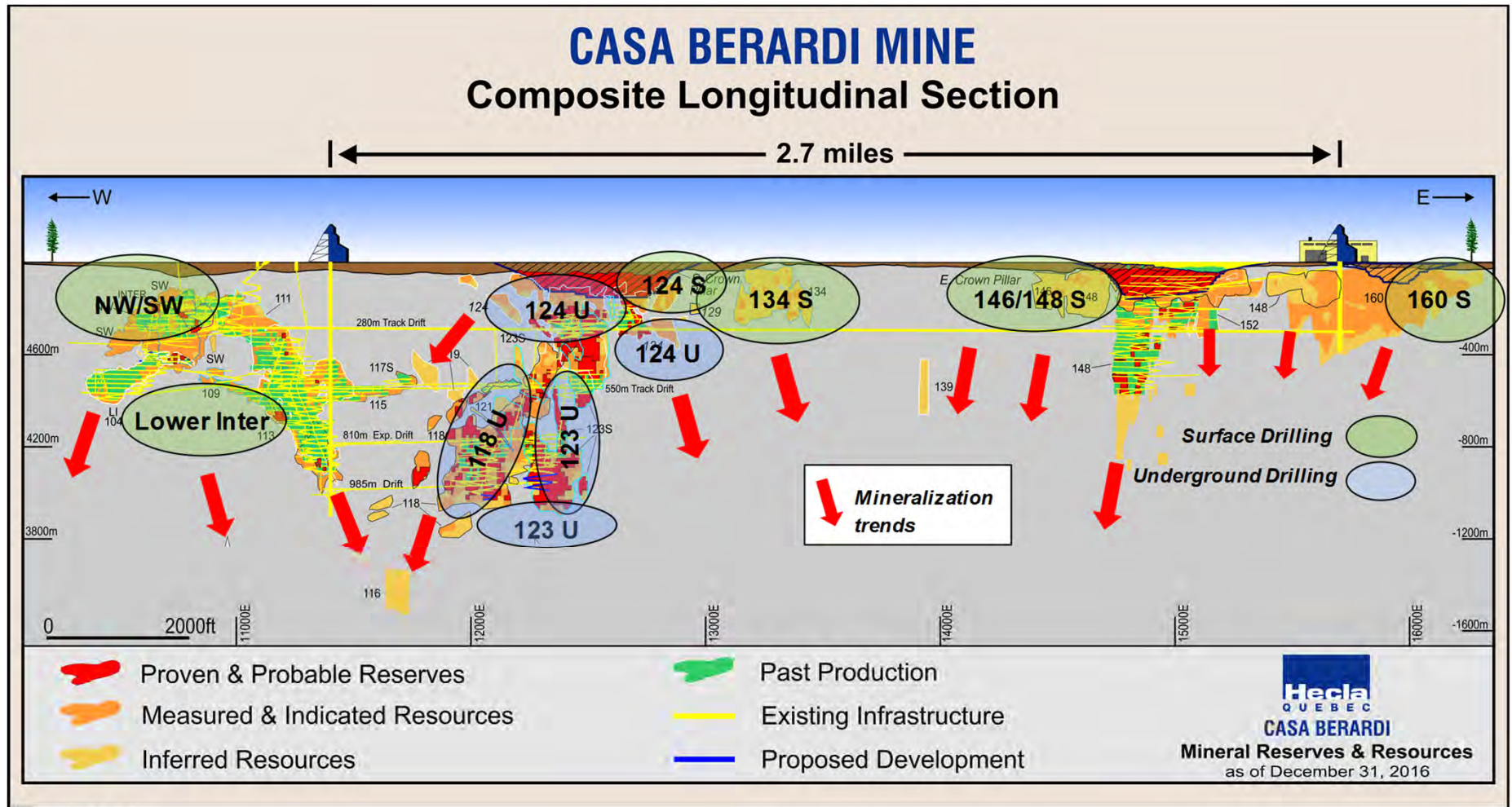
Middle Vein polymetallic potential

Predicting a horizontal polymetallic zone below the oxide reserve



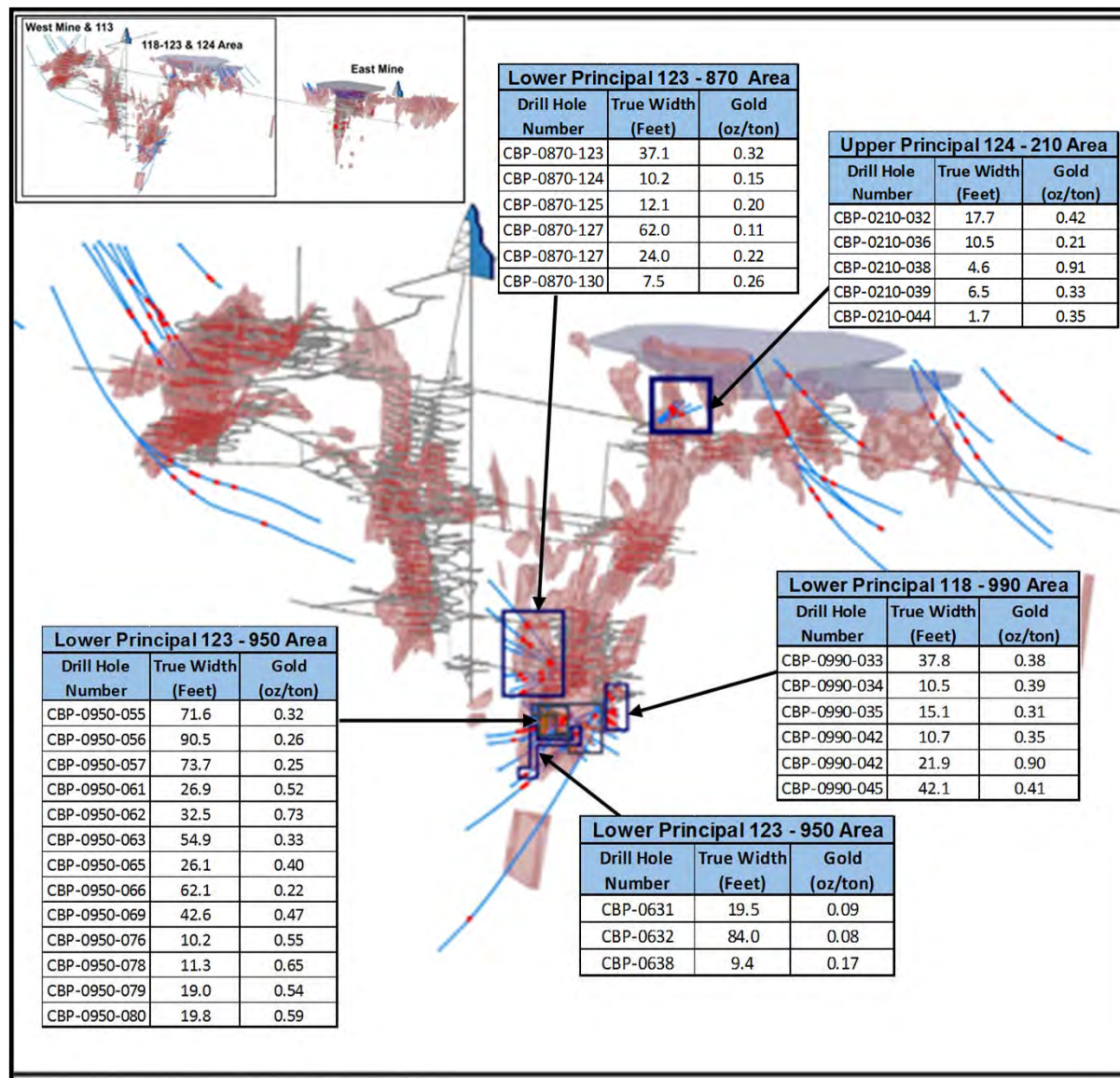
Casa Berardi: Great Exploration Potential

Resources and mineralized trends defined from surface and UG drilling



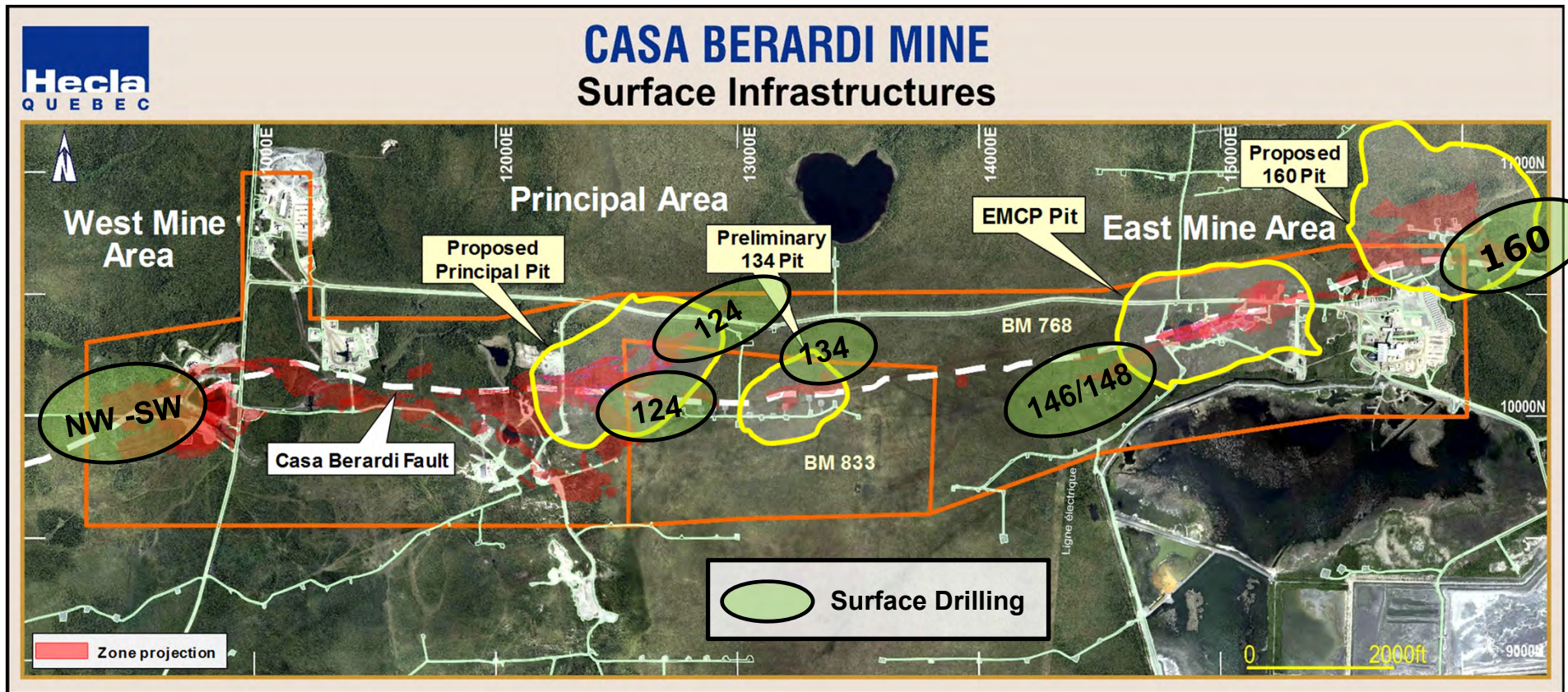
Casa Berardi: Underground drilling

Continued strong results in lower 118 and 123 zones; open at depth



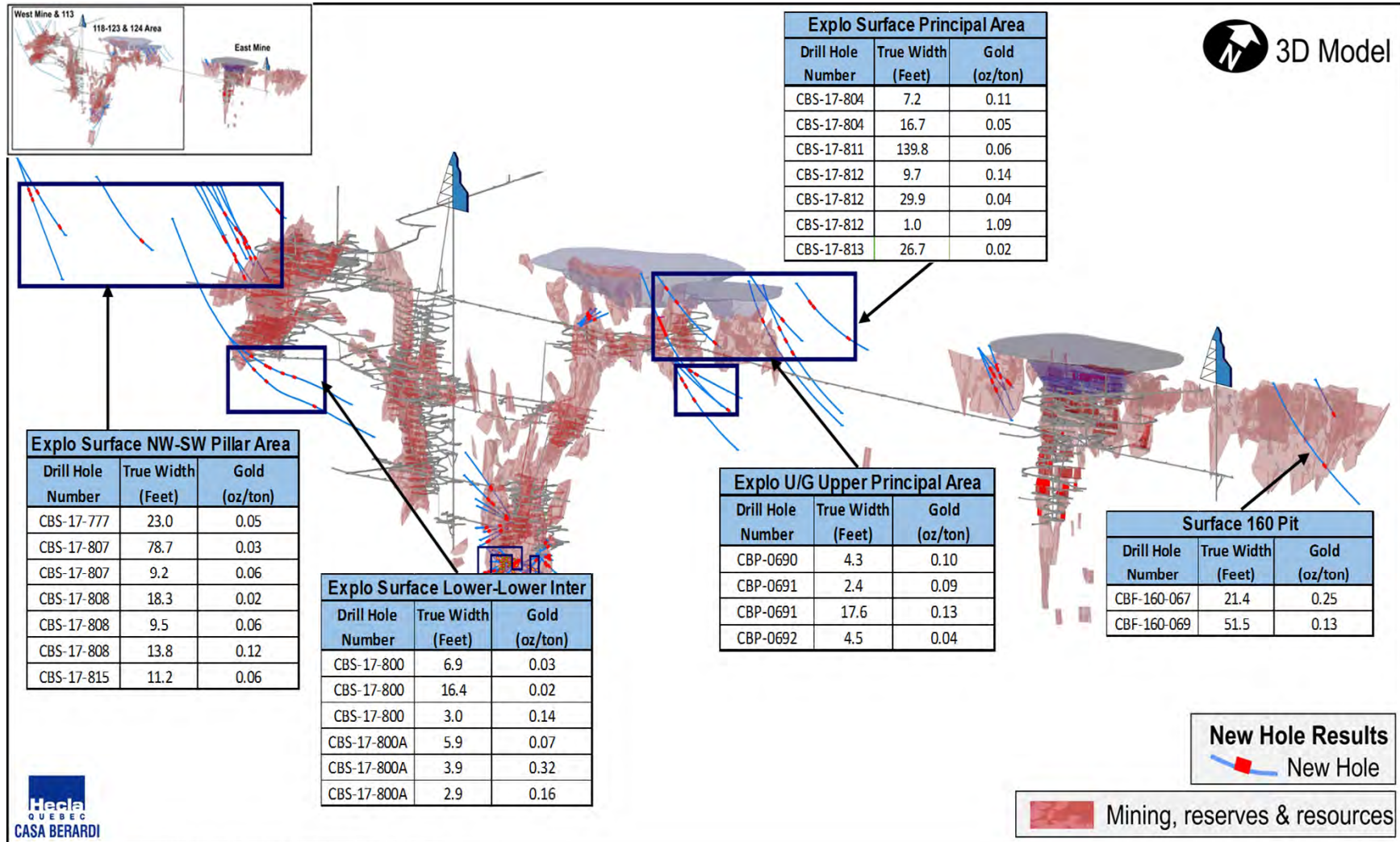
Casa Berardi: Open Pit Potential

Surface view showing potential series of open pits



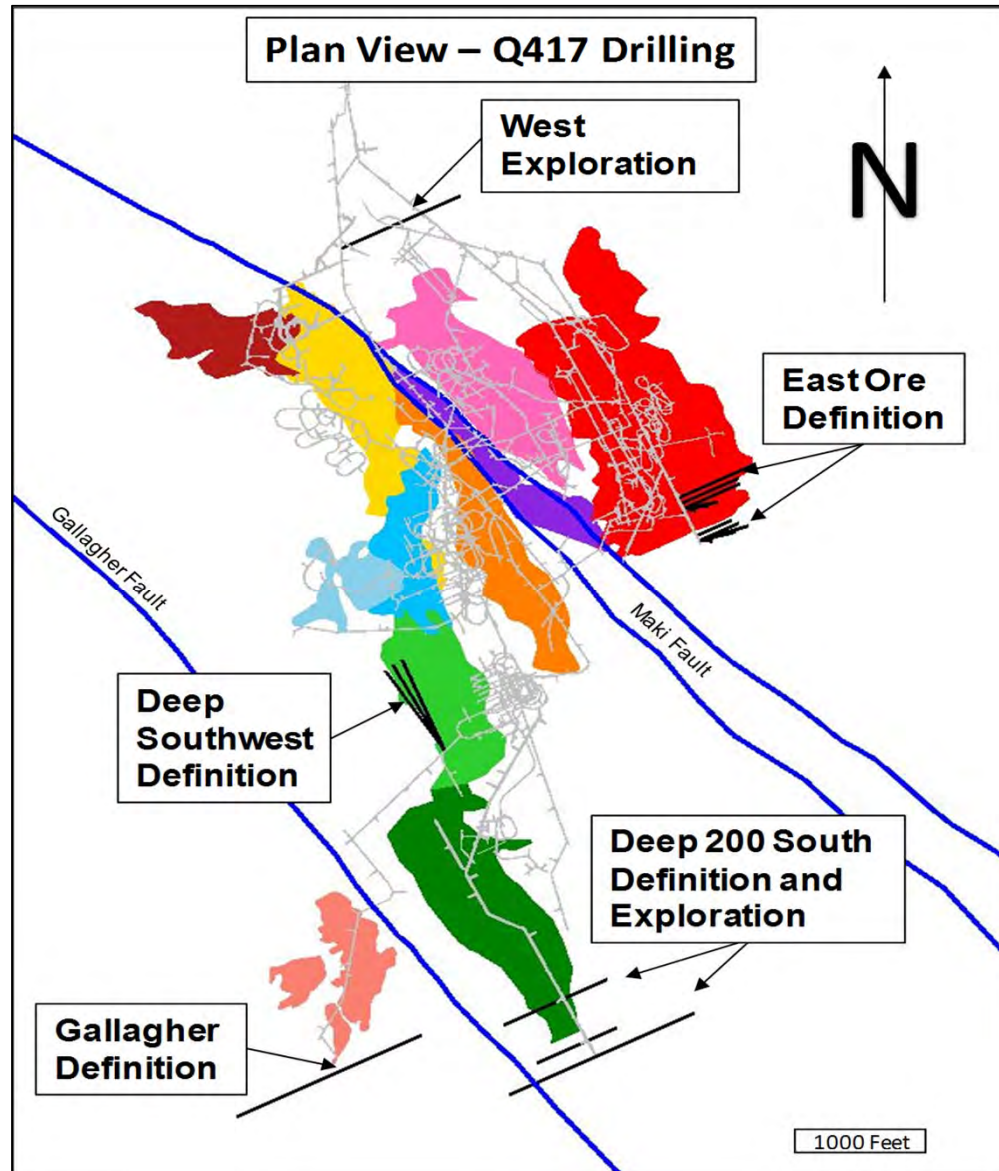
Casa Berardi: East Mine Open Pits

Strong drill results could extend both EMCP pit and proposed 160 Zone pit



Greens Creek: Adding to the known trends

Drilling expected to continue to convert resources into reserves



East Ore Zone Drilling

Narrow but very high grade

